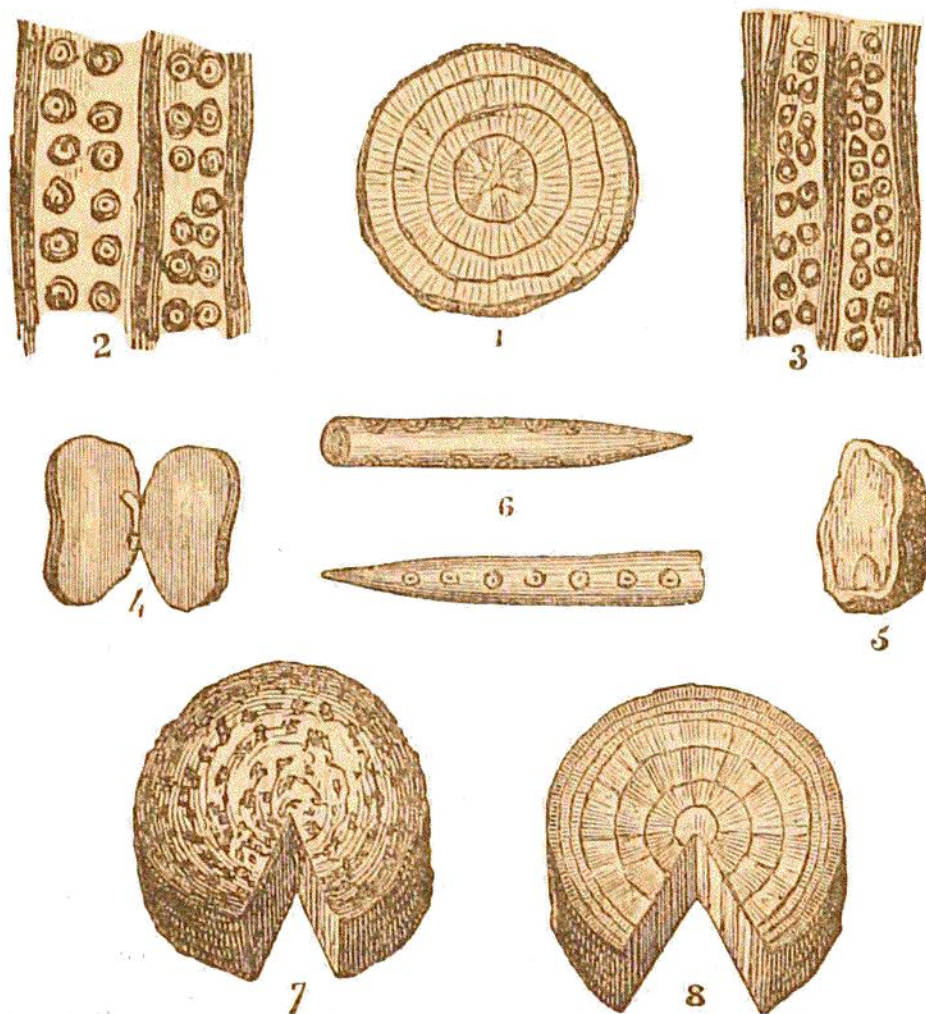


with diverging rays, and a central pith (Tab. 122, fig. 8); the latter character is of peculiar import-



TAB. 122.—ILLUSTRATIONS OF VEGETABLE STRUCTURE.

Fig. 1. Section of a coniferous tree, showing the concentric and radiated structure. 2. Longitudinal section of a pine tree, magnified to exhibit the spotted vessels. 3. Longitudinal section of the vessels of an auricularia, magnified to show the glands or ducts arranged alternately. 4. A dicotyledonous seed split open; the germ is in the middle. 5. Section of a monocotyledonous seed, with the germ below. 6. Dotted tubes, or cells of coniferæ. 7. Section of a monocotyledonous stem. 8. Section of a dicotyledonous tree, showing concentric circles, medullary rays, and the central pith.

ance, because all other classes are destitute of a central cellular column.