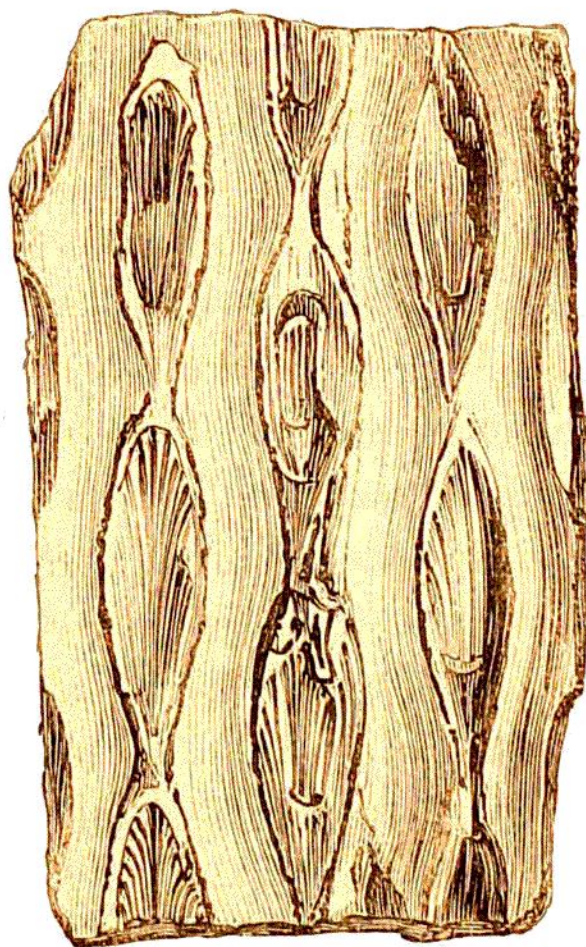


deep oval or circular imprints, apparently produced by the separation of *cones*, and not by the attachment, and falling off of petioles, or leaf-stalks. (*Bd.* p. 475.) Two genera have been formed for their reception, (*Foss. Flor.* pl. 5, and pl. 80.), with the



LIGN. 22.

CAULOPTERIS MACRODISCUS. *Coal.*

names *Bothrodendron* (pitted-tree), and *Ulodendron* (*Bd.* pl. 56.). The depressions on these stems are arranged in two longitudinal rows, placed on opposite sides of the trunk. Some are of a large size, the scars being five inches in diameter.*

* The collection in the British Museum contains some remarkably fine examples of these curious stems.