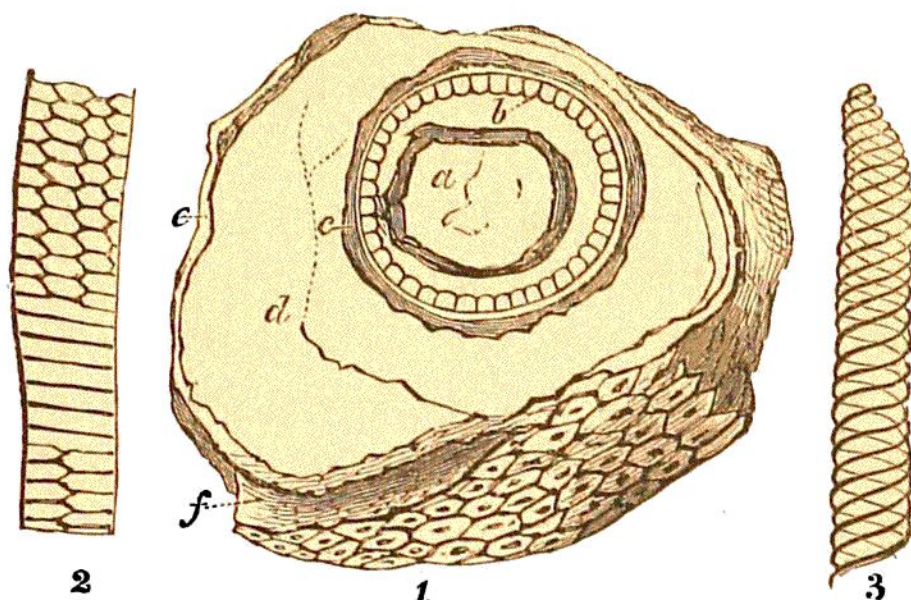


fragment of a stem, which, fortunately for the advancement of science, was placed at the disposal of M. Adolphe Brongniart. It has been described



LIGN. 26. SILICIFIED STEM OF SIGILLARIA ELEGANS.

(M. Adolphe Brongniart.)

Fig. 1.—A transverse section of the silicified stem, from Autun, *nat.*

- a. Situation of the medullary tissue, occupied by coloured silex.
- b. Zone, composed of bundles of vessels, forming the woody tissue.
- c. Band of cellular tissue.
- d. Space between the ligneous cylinder and the bark, with no evident structure, but originally occupied by the external cellular tissue.
- e. Zone of indistinct cellular substance.
- f. External cortical envelopment, or bark.

2.—Portion of one of the vessels of the medullary tissue, as seen in a longitudinal section. (× ×.)

3.—Portion of a spiral vessel of the same tissue. (× ×.)

and illustrated by that eminent botanist, in a Memoir which may justly be characterised as one of the