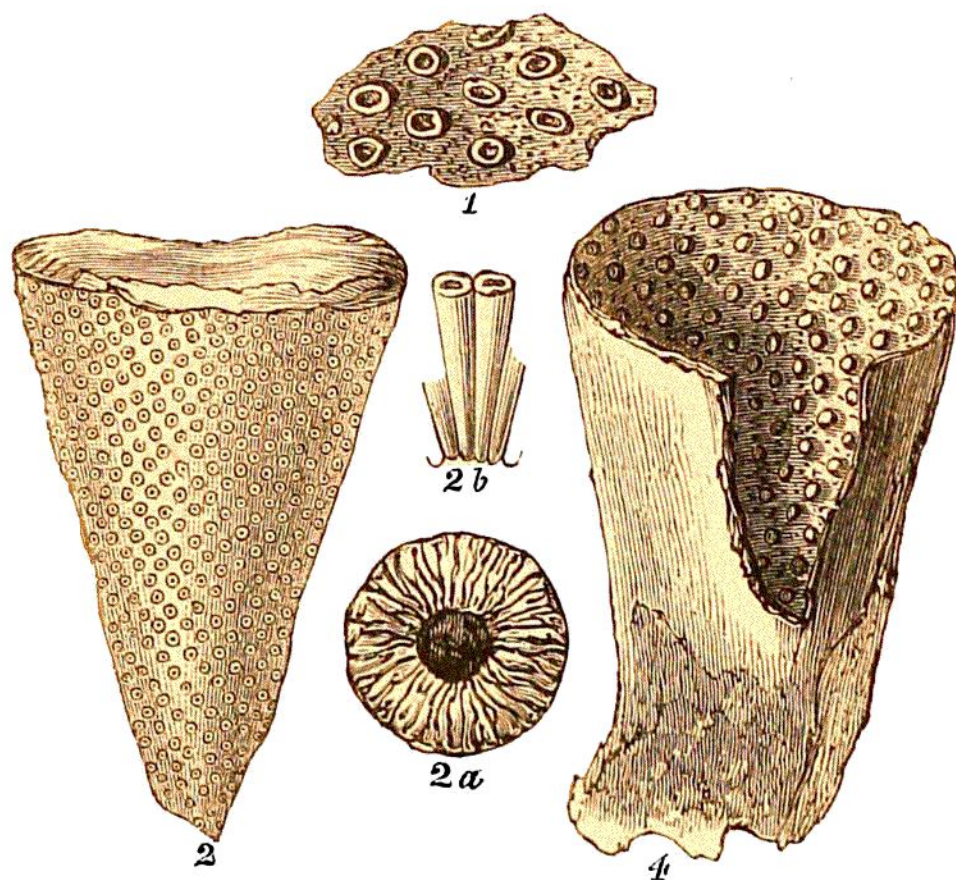


OCELLARIA. *Lign.* 63.—*Polyparium calcareous*; the surface covered with polype-cells, disposed in quincunx order, on both surfaces; the form various.



LIGN. 63. OCELLARIA IN FLINT. *Chalk, Lewes.*

Fig. 1.—Portion of the surface of fig. 2, magnified.

2.—*Ocellaria inclusa*; extracted from the flint, fig. 4.

2a.—Transverse section of the same, showing a central spot of flint, surrounded by radiating cells.

2b.—Two of the polype-cells of fig. 2a, highly magnified.

4.—A hollow flint, from which fig. 2 was extracted; the papillæ on the surface, are casts of the orifices of cells.

Under the name of *Ocellaria inclusa*, Mr. König* has figured and described an elegant fossil body, not

* *Icones Foss. Sect.* fig. 98.