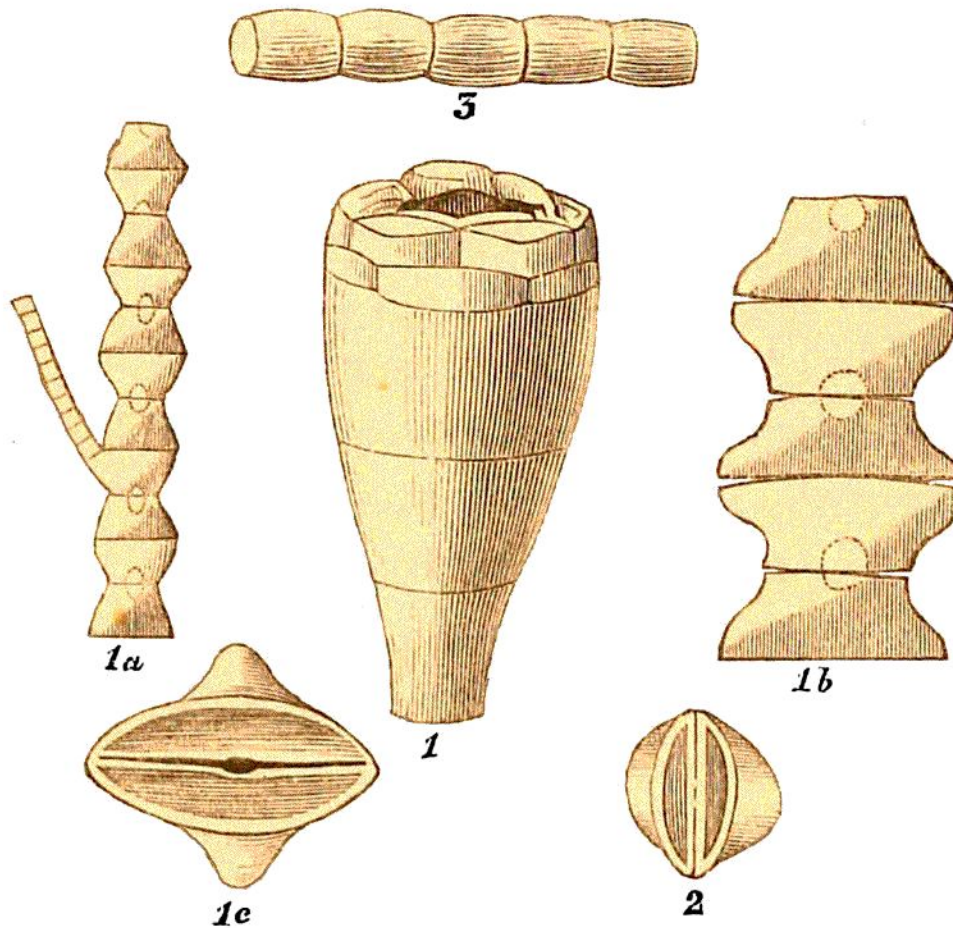


pelvis, which is smooth and round (fig. 1.). The column has articulated side-arms, and the base numerous jointed processes of attachment, which, when found detached from the column, have been



LIGN. 71. APIOCRINITES, OR PEAR ENCRINITES. *Chalk. Lewes.*

Fig. 1.—APIOCRINITES ELLIPTICUS, × 3.

1 a.—Part of the elliptical portion of the column, with a side-arm.

1 b.—Portion of the same, magnified.

1 c.—The articulating surface of an ossiculum.

2.—Ossiculum of *A. flexuosus*. (*M. D'Orbigny.*)

3.—Portion of the cylindrical stem.

mistaken for a distinct species, and named “*Stag’s-horn Encrinite.*” The specimens figured *Lign. 71*, display the essential characters of this small species. When perfect, this Apiocrinite must have borne a