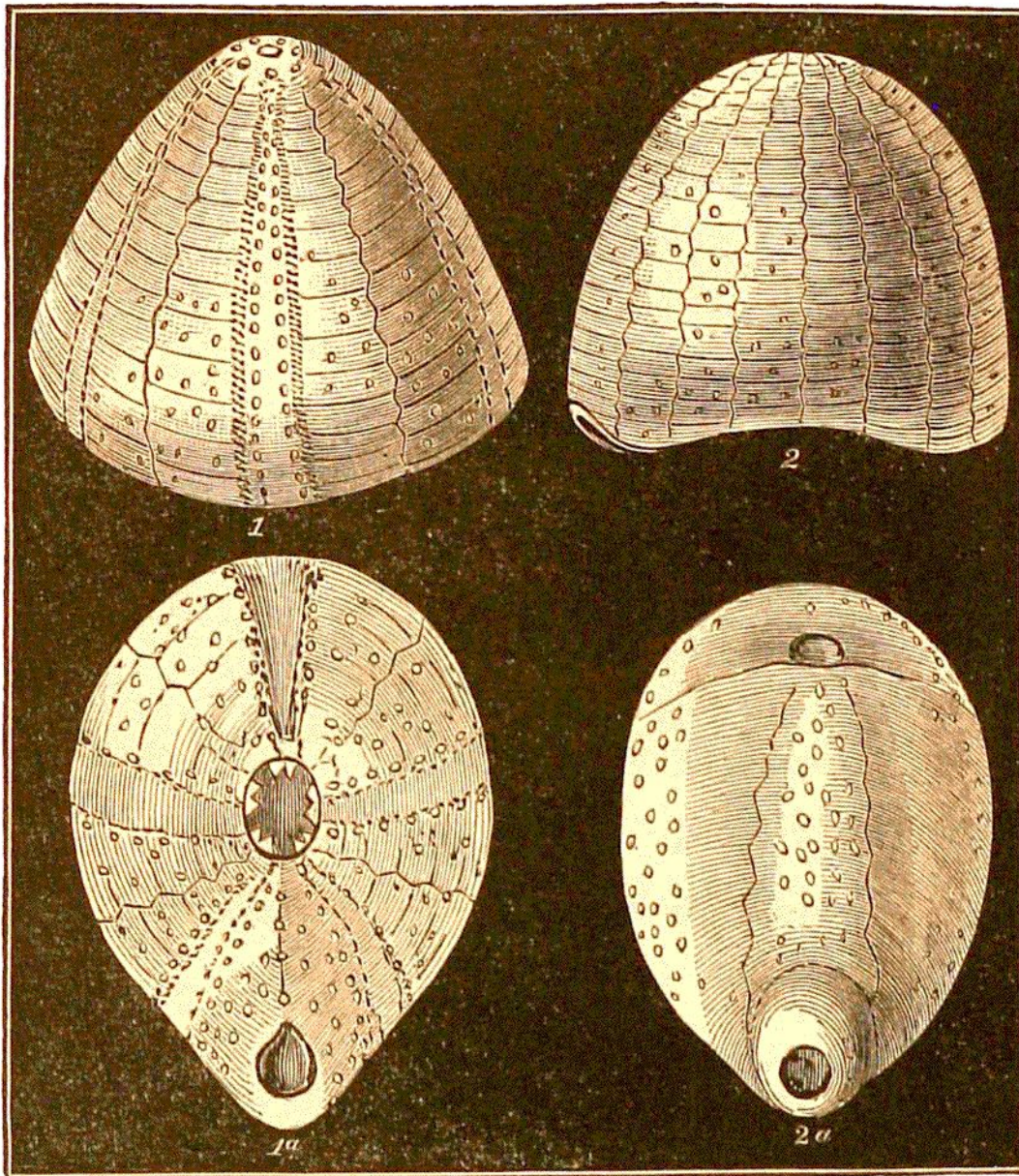


fossil state. They are characterised by their regularly circular or polygonal shell, which is flat below, and convex or conical above, and formed of



LIGN. 79. ECHINITES FROM THE CHALK. *Lewes.*

Fig. 1.—*GALERITES CRETOSUS*: *nat.*

1^a.—Base of the same, with the five teeth.

2.—*ANANCHYTES OVATUS*: $\frac{1}{2}$ *nat.*

2^a.—Base of the same.

dissimilar plates covered with minute tubercles. The ambulacra are narrow, and vary in number