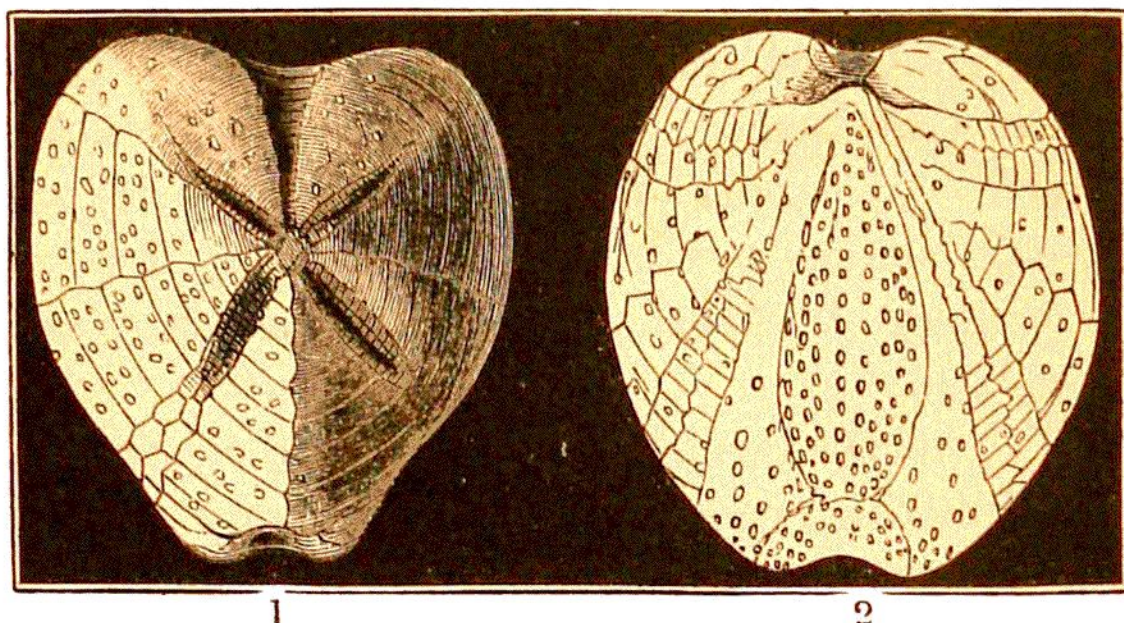


the upper surface is frosted over with crystals of calcareous spar.

SPATANGUS COR-ANGUINUM (*Snake-heart Echinite*). *Lign.* 83.—This is another genus of fossil echini, of which there are many species in the



LIGN. 83. HEART-SHAPED ECHINITE. *Chalk. Lewes.*

Fig. 1.—**SPATANGUS COR-ANGUINUM.** (*Micraster, Agassiz.*)

View from above.

2.—View of the base.

Chalk. The Spatangi are more or less oval, elongated, and heart-shaped, wider before than behind, and with a *sulcus*, or furrow, at the front termination. The shell is thin and delicate, sprinkled with minute tubercles, and composed of large polygonal plates. The spines are very short and small. The mouth is situated more or less anteriorly, and is transverse, and surmounted by a strong projection of the odd inter-ambulacral area, which is named