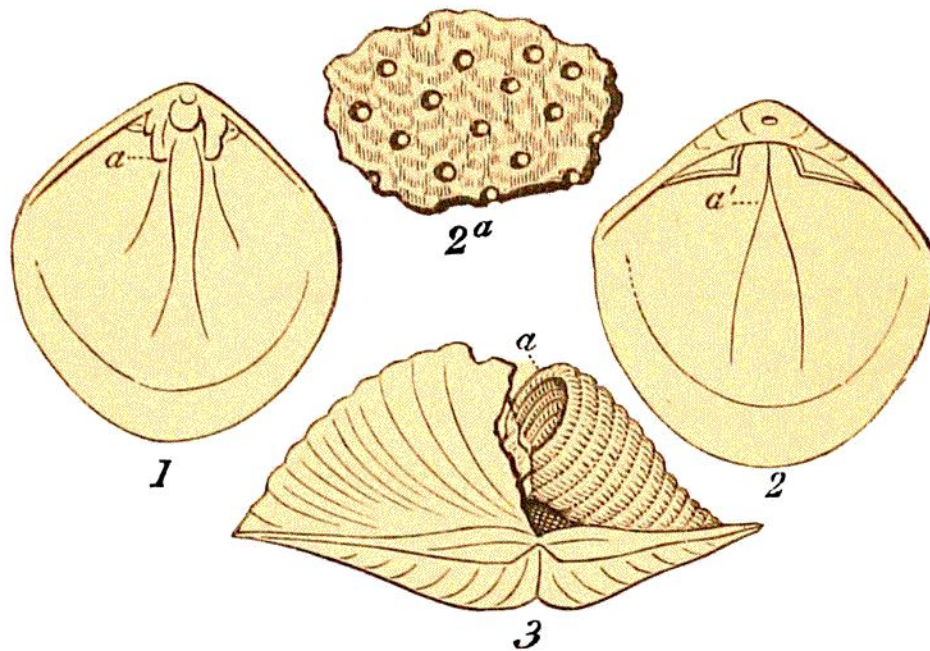


beak, or arched extremity, of the shells. The most interesting circumstance relating to these mollusca, is the respiratory apparatus, which consists of two long ciliated tubes, spirally coiled, united at their



LIGN. 90.

## TEREBRATULA AND SPIRIFER.

Fig. 1 and 2.—Upper and under valve of *TEREBRATULA CARNEA*.

*Chalk; Lewes:* *a, a*, remains of the calcareous support of the *brachia*.

2<sup>a</sup>.—Portion of the shell of *Terebratula carnea*, magnified to exhibit the perforations.

3.—*SPIRIFER TRIGONALIS*, with part of the upper valve removed, to show one of the spiral processes. (*Min. Conch.*) *Mountain Limestone*.

base, and supported by slender calcareous processes, which are often preserved in the fossils. Thus, in specimens from the soft chalk, the calcareous earth may be removed from the interior of the shell, and