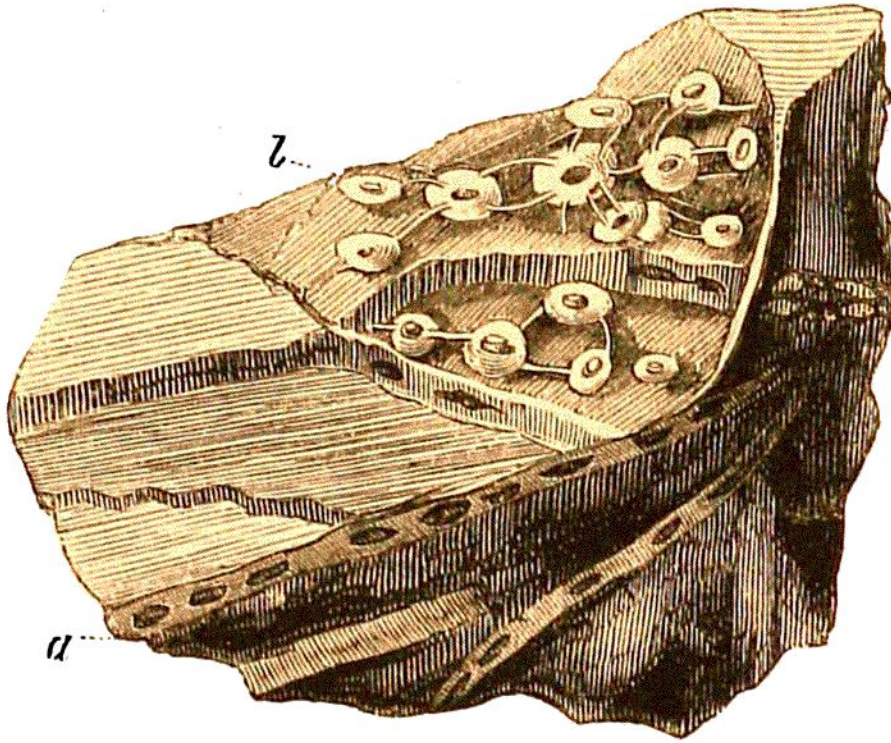


water-worn flints of the South Downs, and in the shingle on the sea-shore of chalk districts; and



LIGN. 94. FLINT, WITH FRAGMENTS OF INOCERAMUS.

Chalk. Lewes.

- a. Marks the section of a fragment of shell, with numerous cavities, occasioned by the depredations of some boring animals.
- b. Portion of shell partially decomposed, and exposing siliceous, globular bodies, connected by filaments, which are flint casts of hollows occasioned by the ravages of the borers.

their origin would be difficult to understand without this explanation.*

* The Rev. W. Conybeare first ascertained the origin of these fossils, and figured and described them in an elegant Memoir, published in Geol. Trans. Vol. II. first series.