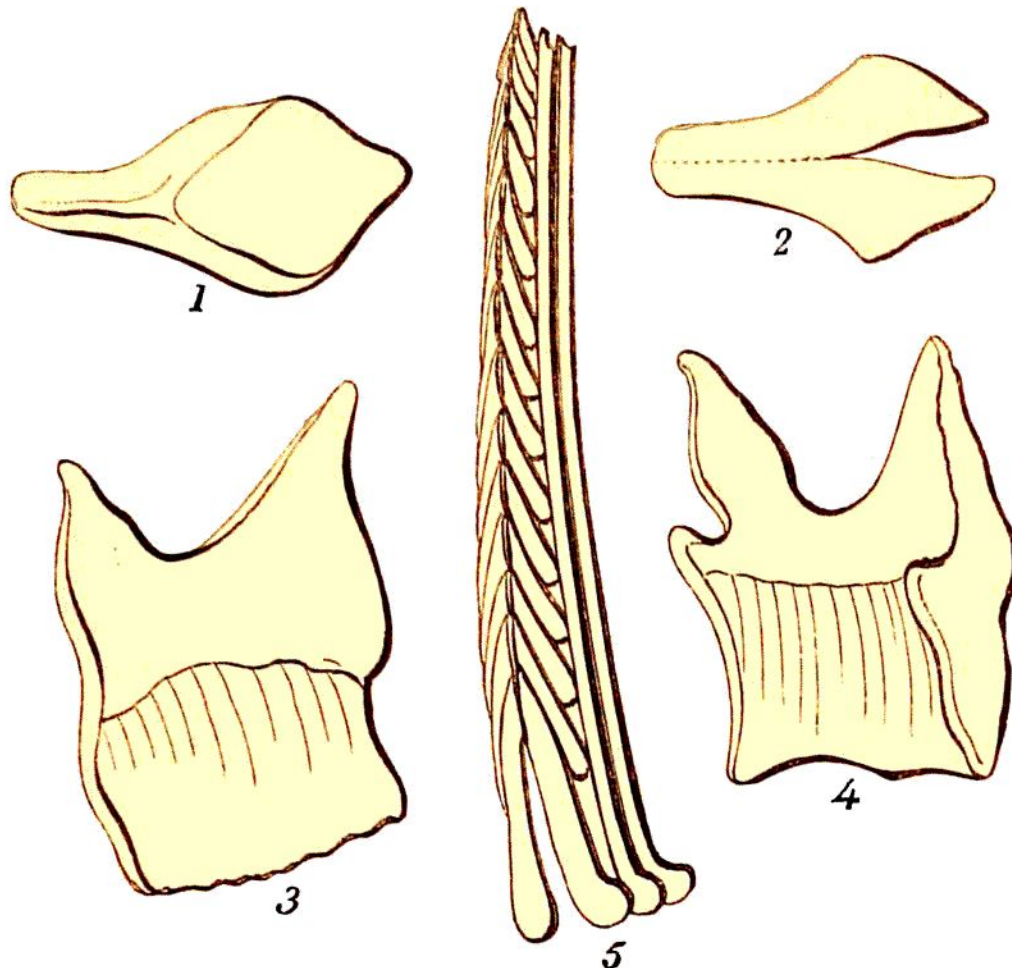


nected by sinuous sutures. The jaws are short and rounded, and furnished with a row of obtuse, conical,



LIGN. 132. SCALES AND FIN OF *LEPIDOTUS MANTELLI*. *Tilgate Forest*.

- Fig. 1.—Scale, with a single process of attachment.
 2.—One of the scales of the lateral line.
 3.—Scale (external surface), with a bifurcating process of attachment; the enamelled visible portion has longitudinal grooves, or folds.
 4.—Scale (viewed on the inner surface), having a bifurcating process of attachment, and a tooth, or projection, on each side, to connect the scale laterally with the adjoining scales.
 5.—The front RAY of the dorsal fin, covered with two rows of enamelled scales, and two other rays behind it.

circular teeth (see *Lign.* 133.), and several rows of sessile teeth, more or less contracted at the base,