

gurnard are dissimilarly arranged from those in the head of the perch. And after tracing the general type in the more anomalous forms, and finding, with Cuvier, that in even these the "skull consists of the same bones, though much subdivided, as the skulls of the other vertebrata," we will be the better qualified for grappling with the not greater anomalies which occur in the cranial buckler of the *Asterolepis*. The occipital plate, *A, a, a*, (fig. 29,) occupies its ordinary place

Fig. 29.

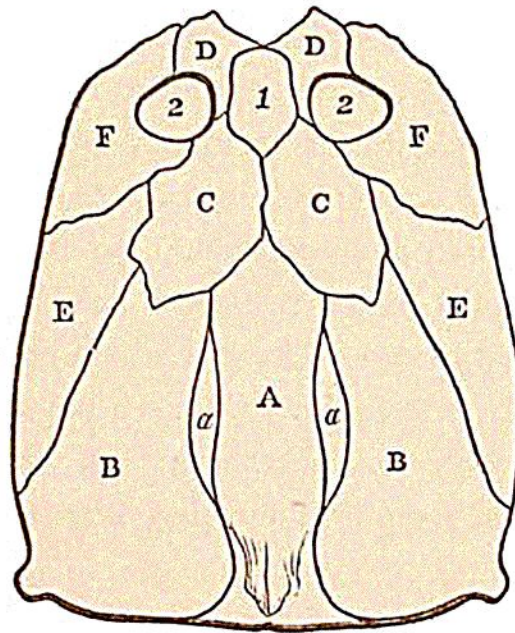


PLATE OF CRANIAL BUCKLER OF ASTEROLEPIS.

opposite the centre of the nape; the two parietals, *B, B*, rest beside it in their usual ichthyic position of displacement; the superior frontal we find existing, as in the young of many animals, in two pieces, *C, C*; the nasal plate *I*, placed immediately in advance of it, is flanked, as in the cod, by the anterior frontals, *D, D*; the posterior frontals, *F, F*, which, when viewed as in the print, from beneath, seem of considerable size, and