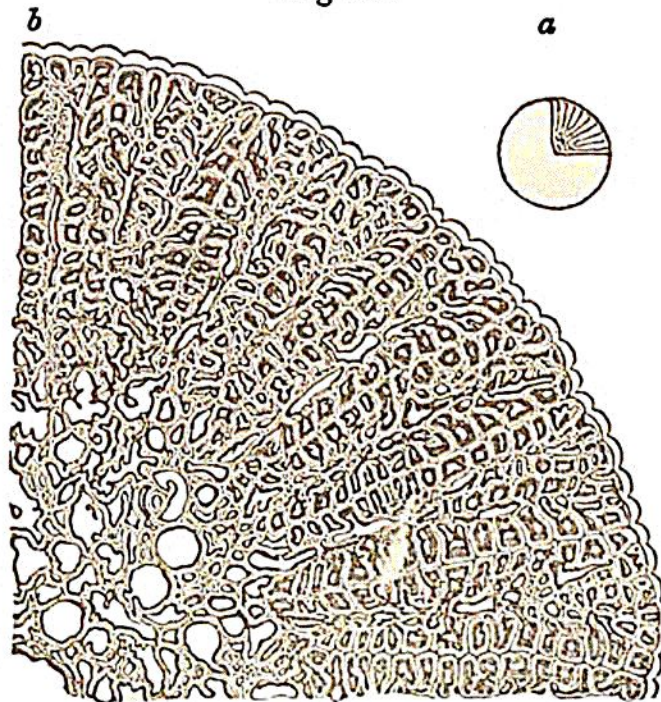


coming symbolized in the dentition of this ancient Ganoid : it, as it were, shows us the *crocodile* lying entrenched behind the fish. The interior structure of these reptile teeth is very remarkable. In the longitudinal section we find numerous cancelli, ranged lengthwise along the outer edges, but much crossed, net-like, within,—greatly more open towards the base than at the point,—and giving place in the centre to a hollow space, occasionally traversed by a few slim osseous partitions. In the transverse section these cancelli are found to radiate from the open centre towards the circumference, like the spokes of a wheel from the nave ; and each spoke seems as if, like Aaron's rod, it had become instinct with vegetative life, and had sprouted into branch and blossom. Seen in a microscope of limited field, that takes in, as in the accompanying print, (fig. 32,) not more

Fig. 32.



PORTION OF TRANSVERSE SECTION OF REPTILE TOOTH OF ASTEROLEPIS.

a. Nat. size.

b. Mag. twelve diameters.