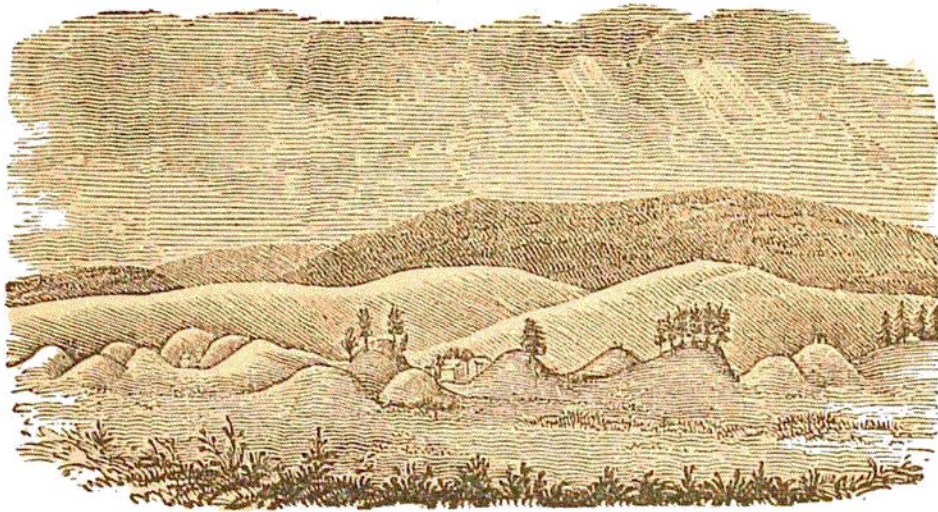
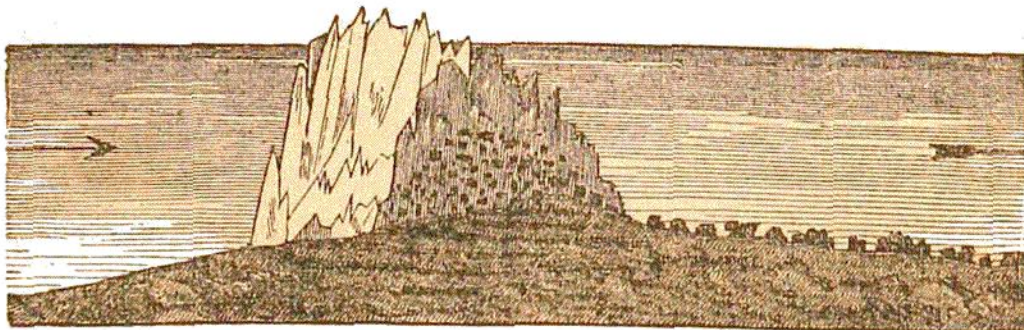


Fig. 110.

*Moraine Terraces in North Adams.*

*Osars* or *Æsars*.—*Os* in Swedish, signifies a pile of gravel, *osar* is its plural, though in English it is customary to use it as the singular. They are ridges of sand, gravel, and bowlders, sometimes only a few rods, and rarely a mile long, lying in the same direction as the striæ on the rocks in a given region, having a somewhat rounded back, and not unfrequently proceeding in a train from the *lee* side of a rock or hill. They seem to have been formed by a powerful current, which accumulated the detritus behind the obstruction in a tapering train, resembling in form an inverted canoe. In Sweden and Russia they embrace coarse bowlders, and become, in fact, mere trains of blocks. Sometimes they appear to have accumulated behind stranded icebergs, which subsequently disappeared, as is shown in Fig. 111, which represents the manner in which a remarkable *Osar*, near Upsale, in Sweden, was probably formed. In this case the lower part is

Fig. 111.

*Osar forming behind a stranded Iceberg.*