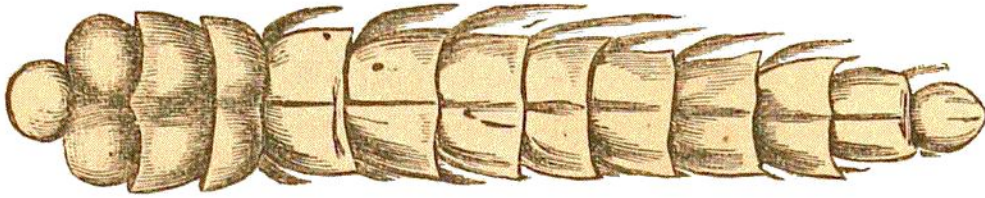


Fig. 288



*Fishes.*—The genera of fishes already described in the Oolitic series, is 66 ; larger than in any formation below, except the carboniferous. They are homocercal. We give a sketch in Fig. 289. of the *Dapedius punctatus* from the lias, and in Fig. 290, a restored *Tetragonolepis* from the same formation.

Fig. 289.

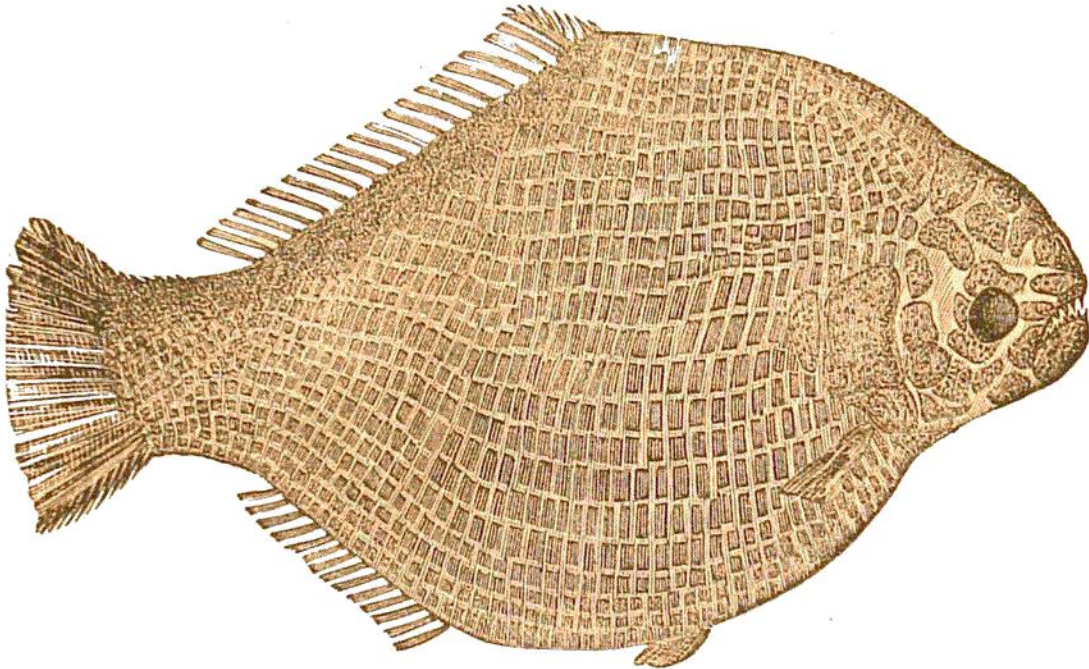
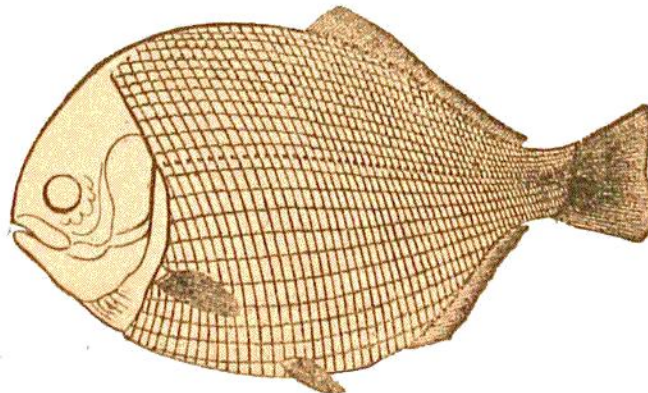
*Dapedius punctatus.*

Fig. 290.

*Tetragonolepis.*