

Fishes of the Old Red Sandstone,' but, subsequently recognising their crustacean character, removed them from the Class of Fishes, and placed them with the *Pæcilipod Crustacea*. The *Eurypteridæ* and *Pterygoti* in England almost exclusively belong to the passage beds—the Downton sandstone and the Upper Ludlow rocks.

Among the marine plants which have been found in the rocks

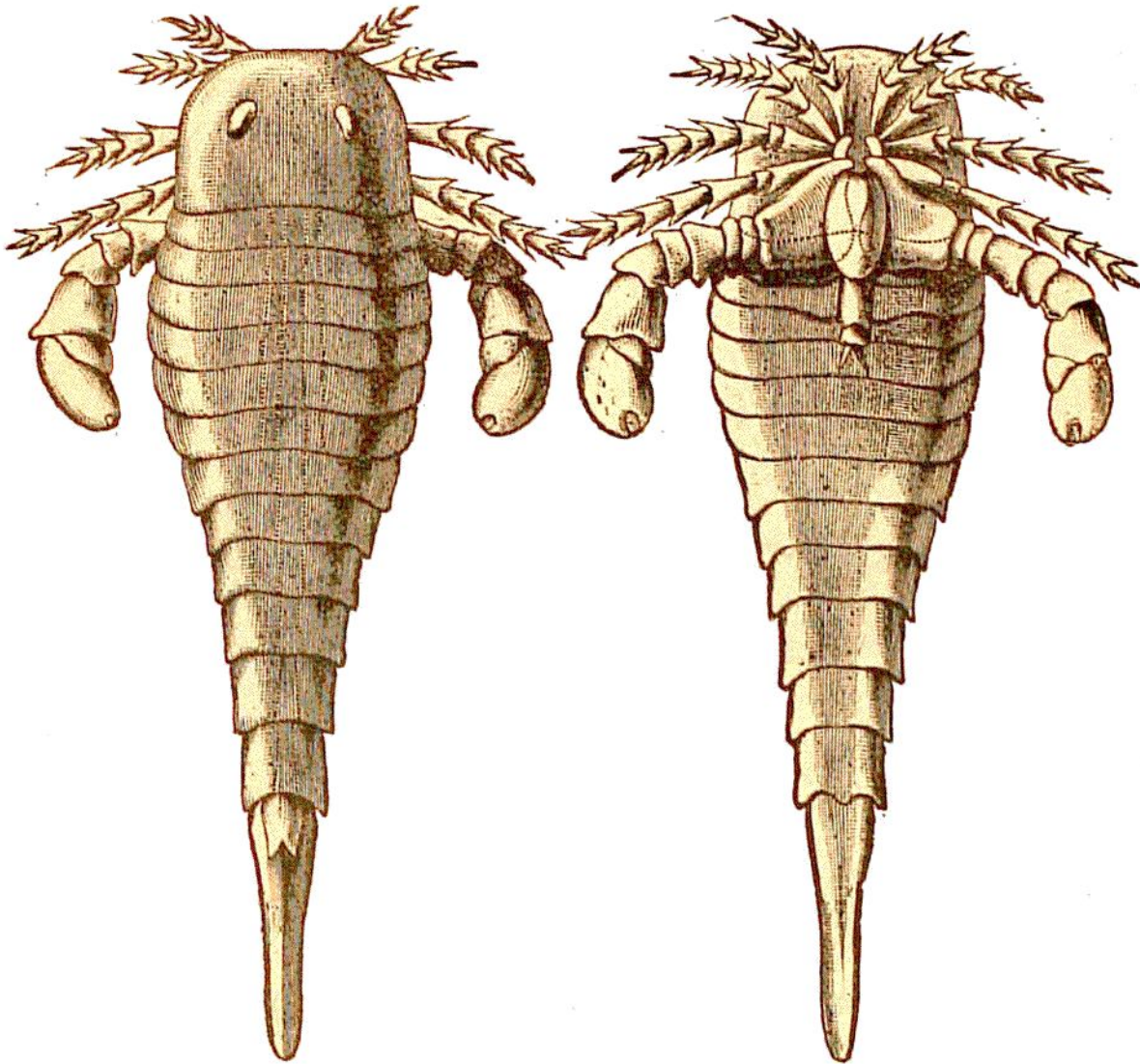


Fig. 24.—*Eurypterus remipes*. Natural size.

corresponding with this sub-period are some species of Algæ, and others belonging to the Lycopodiaceæ, which become still more abundant in the Old Red Sandstone and Carboniferous Periods. Fig. 28 represents some examples of the impressions they have left.

The seas were, evidently, abundantly inhabited at the end of the Upper Silurian period, for naturalists have examined nearly 1,500 species belonging to these beds, and the number of British species,