

resemblance to *Podophthalmus vigil*, as *P. Defrancii*, which only differs from it in the absence of the sharp spines which terminate the lateral angles of the carapace in the former; while *Portunus leucodon* (Desmarest) bears some analogy to *Lupea*.

An ideal landscape of the Miocene period, which is given on the opposite page (PLATE XXIV.), represents the *Dinotherium* lying in the marshy grass, the Rhinoceros, the Mastodon, and an Ape

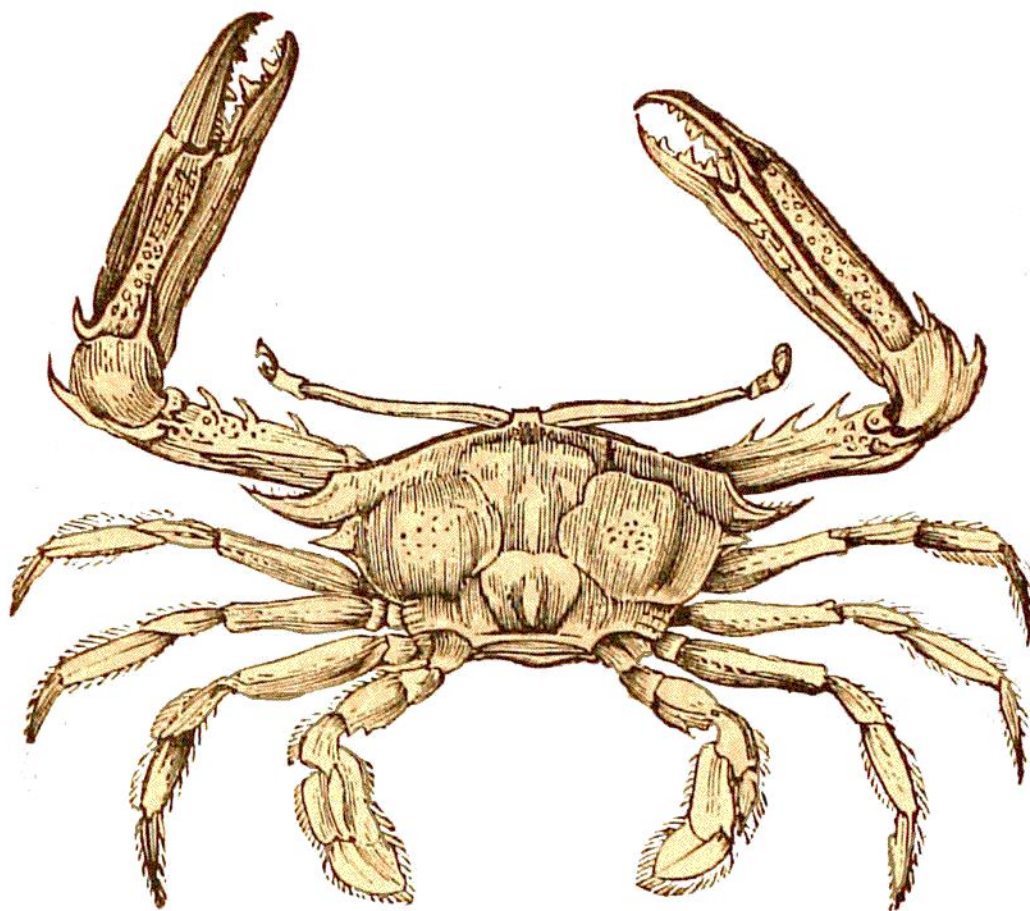


Fig. 171.—*Podophthalmus vigil*.

of great size, the *Dryopithecus*, hanging from the branches of a tree. The products of the vegetable kingdom are, for the greater part, analogous to those of the present time. They are remarkable for their abundance, and for their graceful and serried vegetation; and still remind us in some respects, of the vegetation of the Carboniferous period. It is, in fact, a continuation of the characteristics of that period, and from the same cause, namely, the submersion of land under marshy waters, which has given birth to a sort of coal which is often found in the Miocene formation, and which we call *lignite*. This imperfect coal does not quite resemble that of the Carbo-