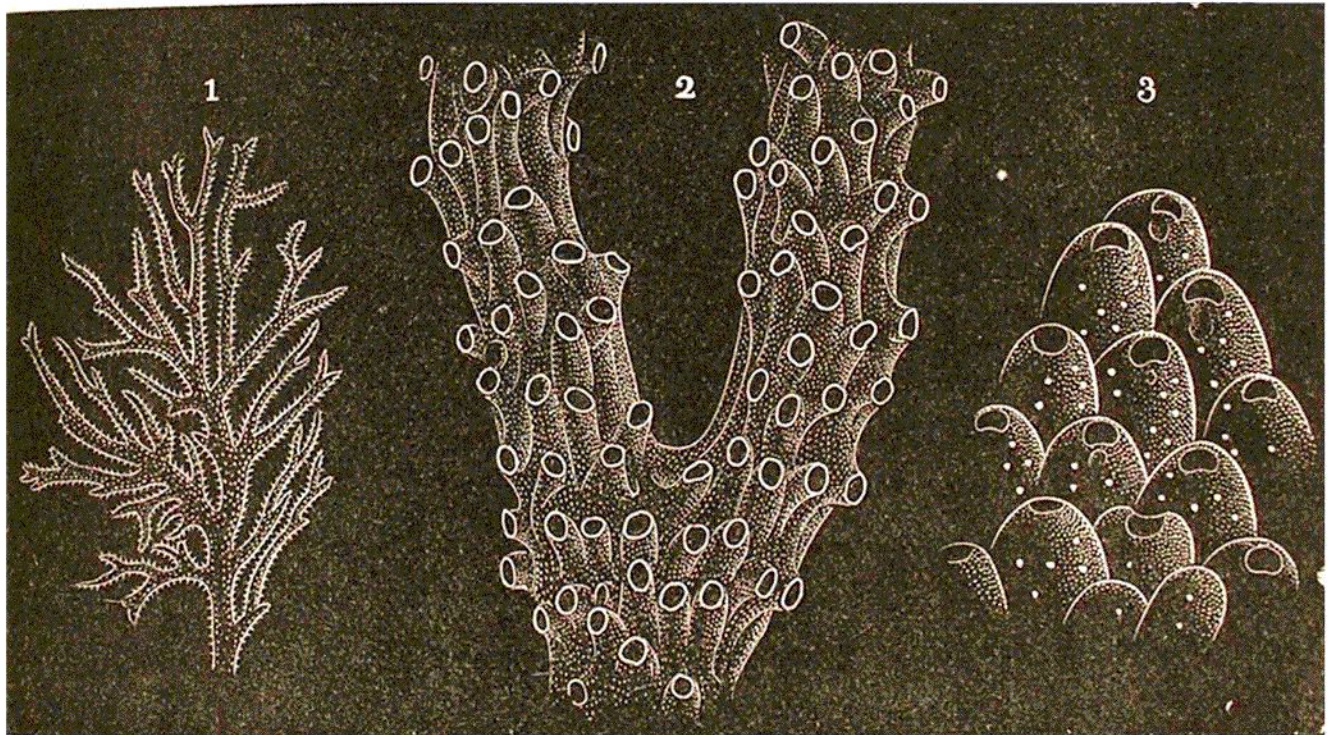


corals of the Chætetes family were possibly, like the Millepores, Acaleph corals, as suggested by Agassiz. Others have suggested, with perhaps better reason, that they were Bryozoan.

III. BRYOZOANS.

The Bryozoans are very small animals, and look much like Hydroids. Although belonging to the sub-kingdom of Mollusks, they are externally polyp-like, having a circle or ellipse of slender tentacles around the mouth. But, in internal structure, and all of the animal below the head, they are Mollusks. They form delicate corals, membranous or calcareous, made up of minute, cabin-like cells, which are either very thin crusts on sea-weeds, rocks, or other supports, or



1, 2, *HORNERA LICHENOIDES*; 3, *DISCOPORA SKENEI* SMITT.

slender moss-like tufts, or graceful groups of thin, curving plates, or net-like fronds; and sometimes thread-like lines, or open reticulations.