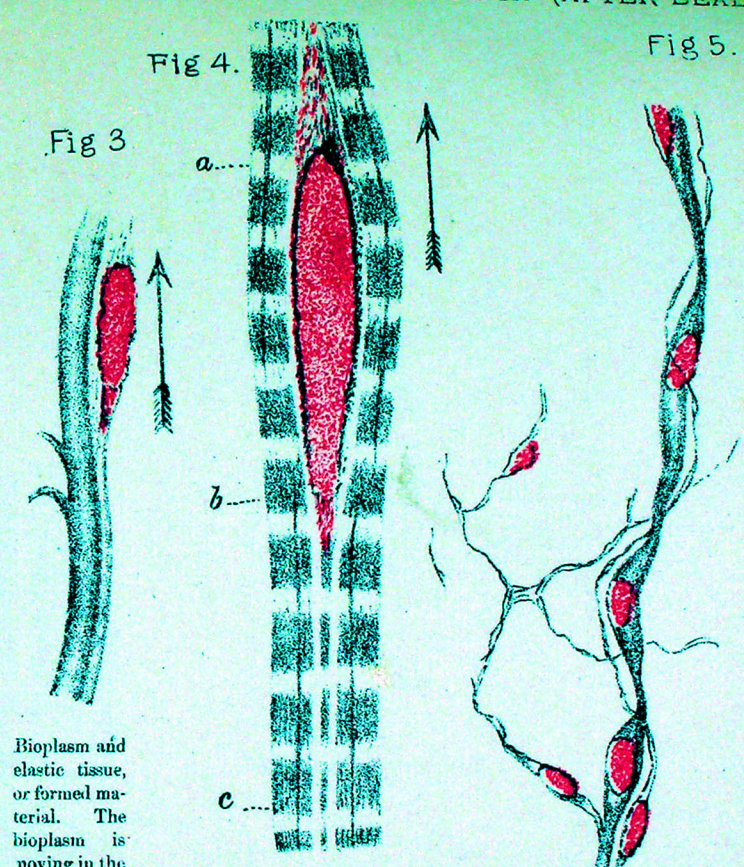


Perpendicular section through thick layer of epithelium covering a papilla of the tongue, showing the bioplasm or living matter and the formed material of each elementary unit or cell.

In the lower part of figure 1, the cells which are closest to the nutrient matter are seen. Here there are no SEPARATE CELLS, but the soft formed material forms a continuous mass. These are the youngest bioplasms, and are multiplying in number. When the formed material has accumulated around the bioplasm to some extent the process of multiplication ceases. As the cells advance towards the surface, C, to take the place of those removed, the formed material becomes firm and dry, and the remains of the bioplasm die, when the whole "cell" consists of lifeless formed material only. x 700



Bioplasm and elastic tissue, or formed material. The bioplasm is moving in the direction of the arrow and forming the elastic tissue as it proceeds.

Bioplasm and formed material (contractile tissue) of muscle. The bioplasm is moving in the direction indicated by the arrow. It is now between a and b, but was between b and c.

Development of young dark-bordered nerve fibres at a very early period, showing bioplasm and formed material of young elementary parts and the fine fibre coiling spirally round the developing dark bordered fibre.

x about 1800.