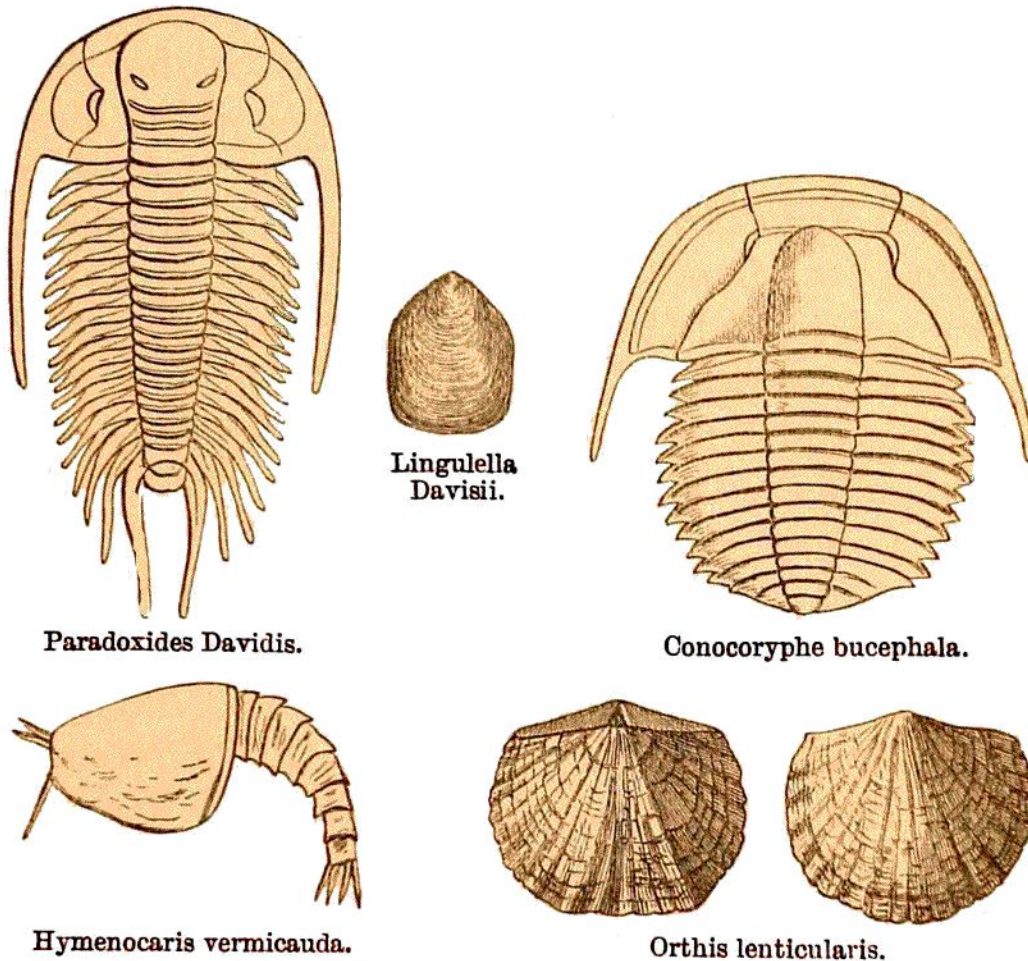


*Hymenocaris vermicauda*, and the bivalve crustacean *Leperditia bupestris*. Various annelids are found, *Cruziana*, &c., and in the higher part of the strata Polyzoa, of the genus *Fenestella*, together with a few

FIG. 16.



Group of Lingula Flag Fossils.

brachiopoda of the genus *Orthis*, *O. lenticularis* and others, *Obolella sagittalis* and *maculata*, and *Discina labiosa*, three species of *Theca* (pteropods), &c.

Of the fossils of this formation *Protospongia fenestrata* is common in the strata from the Cambrian to the Lower Lingula flags, *Agnostus Davidis* and *A. scutalis*, *Anopolenus Henrici*, *A. Salteri* are also found in the Menevian beds, together with *Conocoryphe applanata*, and *C. humerosa*, both of which begin in