

usual among the river-ravines of this country, which are generally broader than deep.¹ It has been worn out of the conglomerate across the lines of joint, and is an excel-

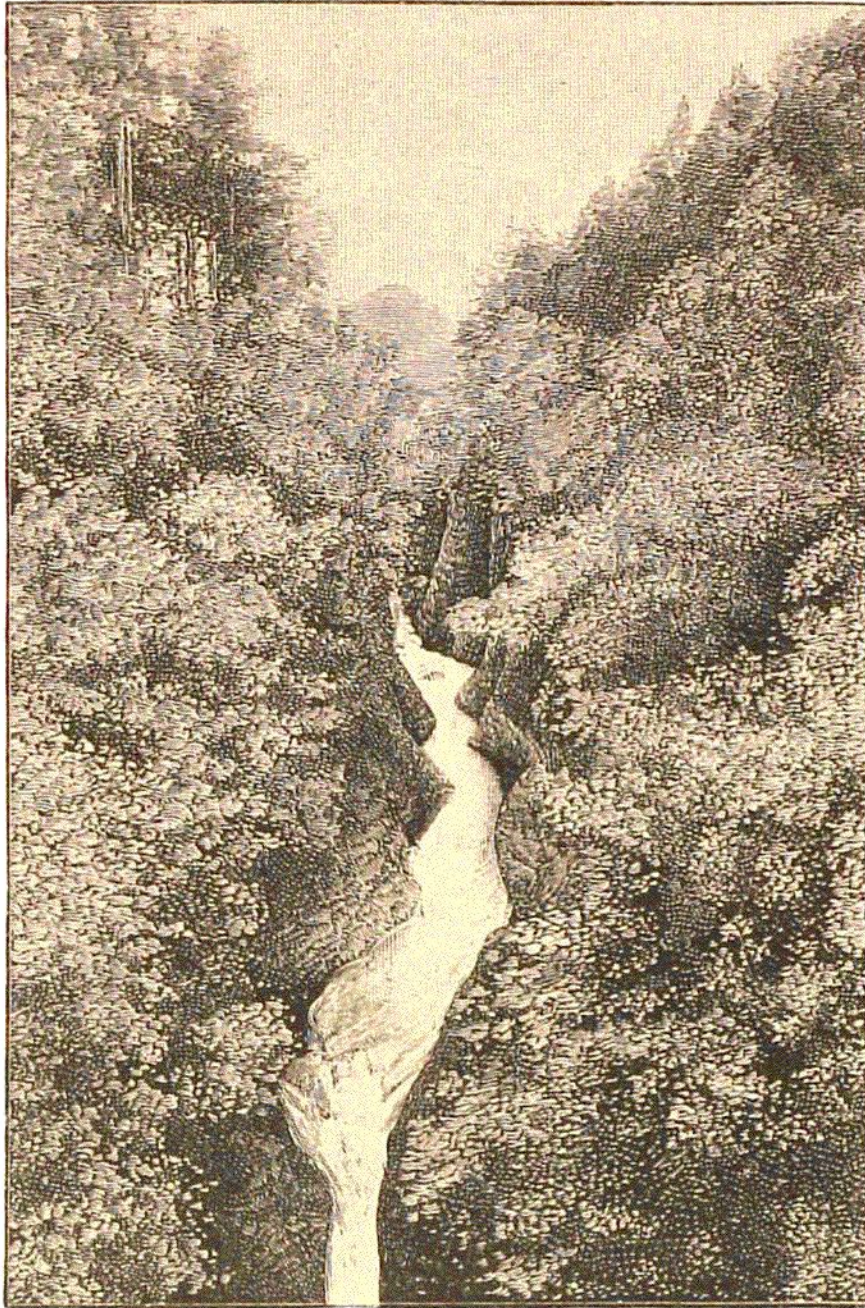


FIG. 38.—The Black Rock of Novar, Cromarty Firth. A chasm eroded by a stream in Old Red Conglomerate.

lent example of unaided aqueous erosion. The large smooth semicircles that have been scooped out of the

¹ These measurements have been taken for me by my colleague in the Geological Survey, Mr. H. Miller.