

beds are the *Hercynian* of Beyrich; and under this name are placed, by Barrois, beds occurring at Erbray in the Lower Loire. They have been identified also in Sardinia, India, China, Australia, New Zealand, and the Argentine Republic.

LIFE.

The Wenlock and Ludlow beds abound in fossils, especially the former, which represent nearly the American Niagara group. Evidence of British *land plants* occurs in the Ludlow beds; the earliest of British *Fishes*—species of *Pteraspis* and *Cephalaspis*—in the Lower Ludlow; the earliest of *Scorpions*, in the Upper Ludlow and the Upper Silurian of Gothland, Sweden.

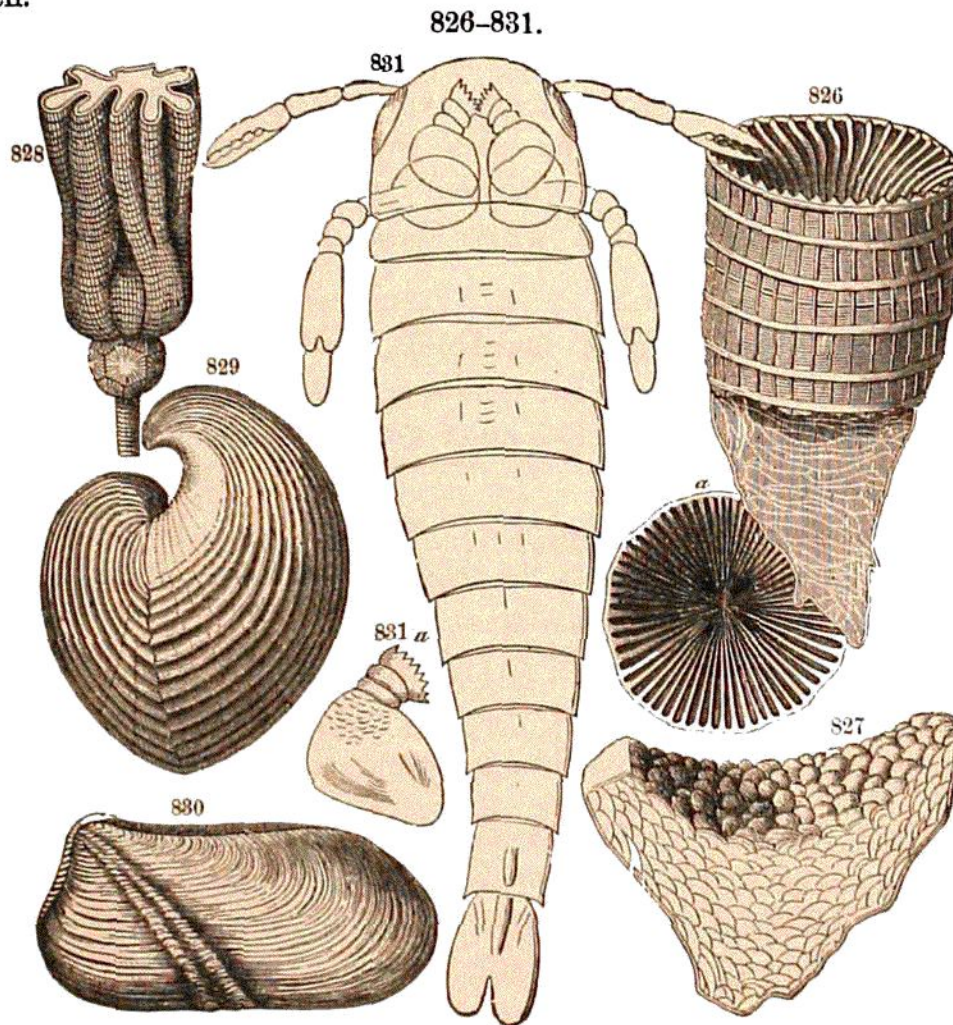


Fig. 826, *Omphyra turbinata*; 827, *Cystiphyllum Siluriense*; 828, *Crotalocrinus rugosus*; 829, *Pentamerus Knightii*; 830, *Grammysia cingulata*; 831, *a*, *Pterygotus bilobus*. 826, 827, from Edwards and Haime; 828, Murchison; 829, Brown; 830, Naumann; 831, Salter.

LAND PLANTS.—The *Pachytheca* of Hooker is supposed to be the spores or sporangia of a terrestrial plant (*Q. J. G. Soc.*, xxxviii., 107, 1882). The Denbighshire grits of the Wenlock of North Wales have afforded the *Nematophyton* of Dawson, having loose tubular cells within, supposed to be from a tree of large size, but now admitted to be a Seaweed. The earliest of well-defined ferns has been described by Saporta for the schists of Angers, which