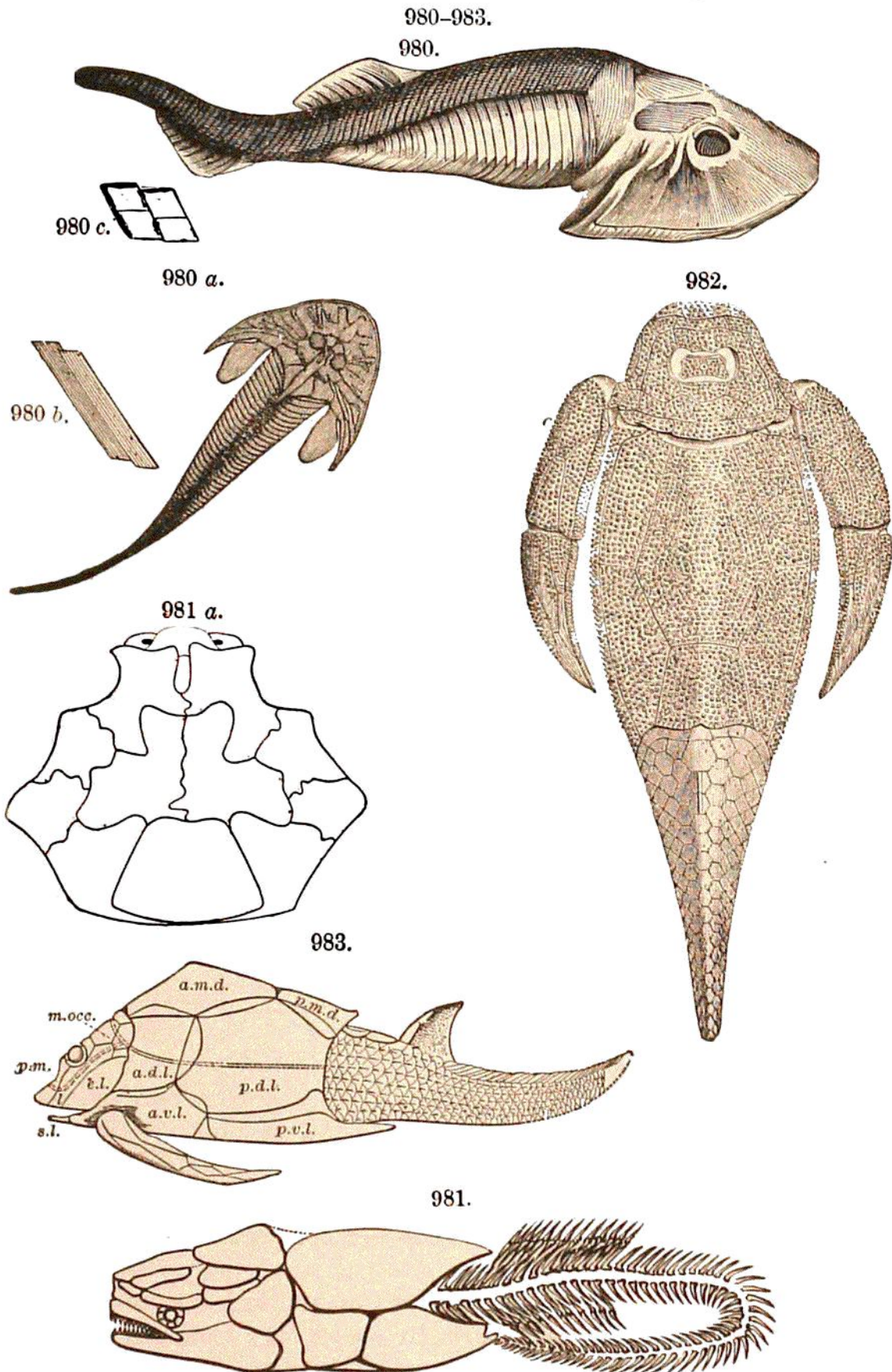


Modern Isopods are seldom over two inches long. The basal joint of a leg of the *Præarturus* was three inches long, and three quarters of an inch



PLACODERMS. — Fig. 980, *Cephalaspis Lyelli* ($\times \frac{1}{2}$); 980 a, same, with pectoral fins in place; 980 b, c, scales; 981, *Coccosteus declivens*, side view; 981 a, dorsal plates; 982, *Pteriothys Milleri* ($\times \frac{1}{2}$); 983, *Pteriothys cornutus*. Figs. 980, 981, Agassiz; 981 a, 983, Traquair; 982, Pander.