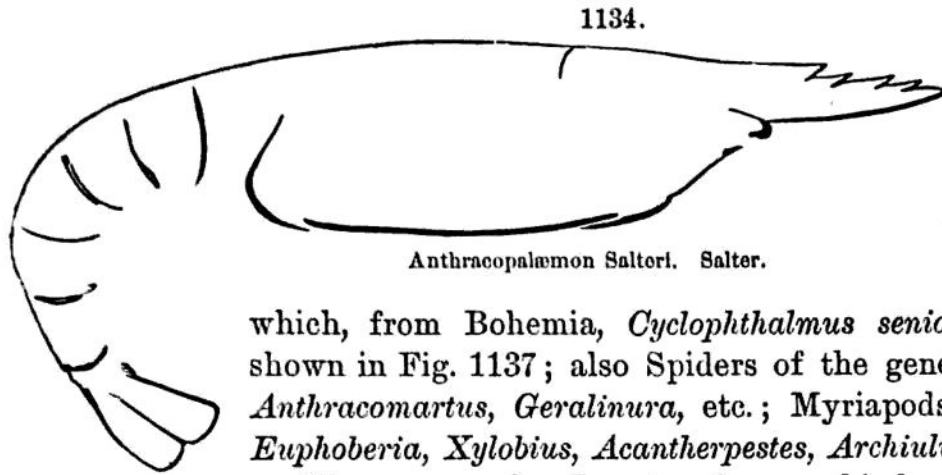


The Subcarboniferous beds of Great Britain have yielded 16 species, but the Coal-measures none.

The foreign Coal-measures have afforded also Eurypterids; Limulids, as species of *Prestwichia*, Fig. 1136, and *Belinurus*; Crustaceans, of the higher

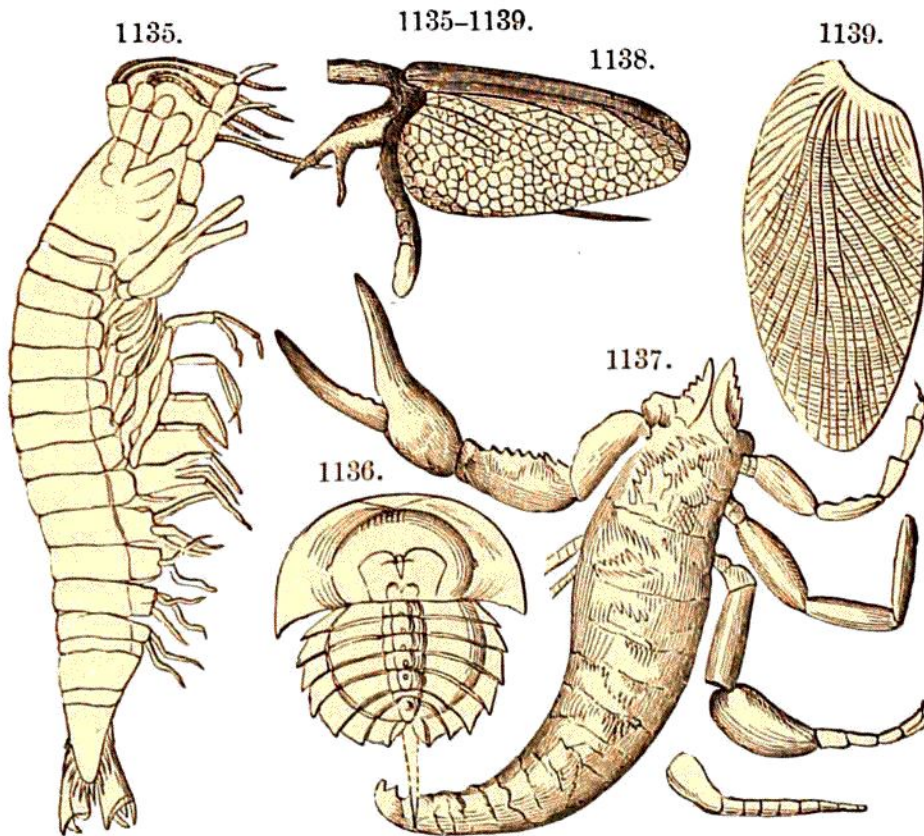


1134.  
Anthracopalæmon Salteri. Salter.

tribe of Macrurans, as Fig. 1134, *Anthracopalæmon*, Fig. 1135, *Gampsonyx*, from Saarbrück; Scorpions, one of

which, from Bohemia, *Cyclophthalmus senior* of Corda, is shown in Fig. 1137; also Spiders of the genera *Architarbus*, *Anthracomartus*, *Geralinura*, etc.; Myriapods of the genera *Euphoberia*, *Xylobius*, *Acantherpestes*, *Archiulus*.

There were also Insects of many kinds. The Orthopteroidea included Cockroaches, of the genera *Etoblattina*, Fig. 1139, *Anthracoblattina*, *Gerablattina*, and others; but few kinds compared with North



CRUSTACEAN. — Fig. 1135, *Gampsonyx simbriatus*. LIMULID. — Fig. 1136, *Prestwichia rotundata* ( $\times \frac{1}{2}$ ). SCORPION. — Fig. 1137, *Cyclophthalmus senior*. INSECTS. — Fig. 1138, *Dietyoneura anthracophilla*; 1139, *Etoblattina primeva*. Figs. 1135, 1137, 1138, Brown; 1136, Murchison; 1139, Vogt.

America; Protophasmids (or species related to the modern "Leaf-insects" and "Walking-sticks") of several genera, as *Titanophasma Fayoli* of Brong-