

end of the earthwork shows a steep slope over which the workmen are constantly discharging wagon-loads of rubbish. Hence the embankment, if cut open longitudinally, would present a "false-bedded" structure, for it would be



Fig. 193.—Plan of upper surface of a False-bedded Coal-measure Sandstone, Nolton Haven, Pembrokehire. (By the late Professor John Phillips.)

found to consist of many irregular layers inclined at a high angle in the direction in which the formation of the mound had advanced. Among geological formations of all ages, occasional sections of the upper surfaces of such false-

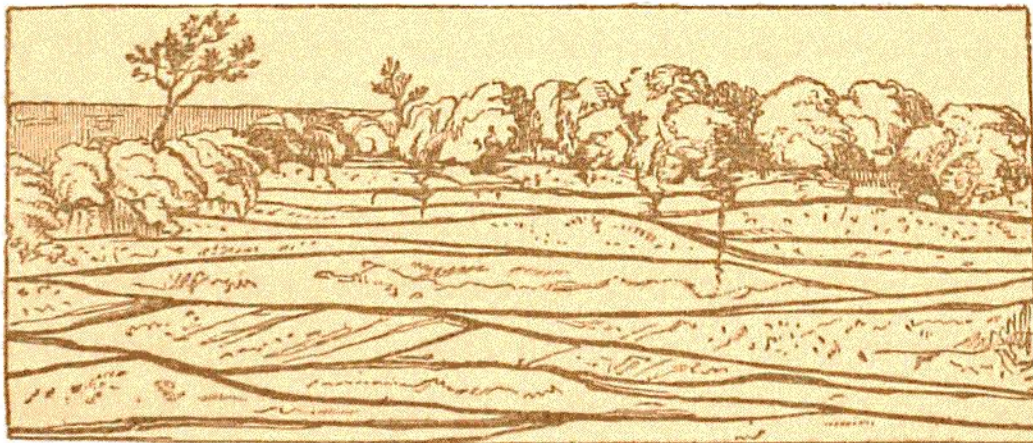


Fig. 194.—False-bedded Strata, Old Red Sandstone, Ross, Herefordshire. (By the late Sir Henry James, R.E.)

bedded strata show the singular irregularity of the structure, and bring vividly before the imagination the feeble shifting currents by which the sediment was drifted about in the shallow water where it accumulated (Fig. 193). A