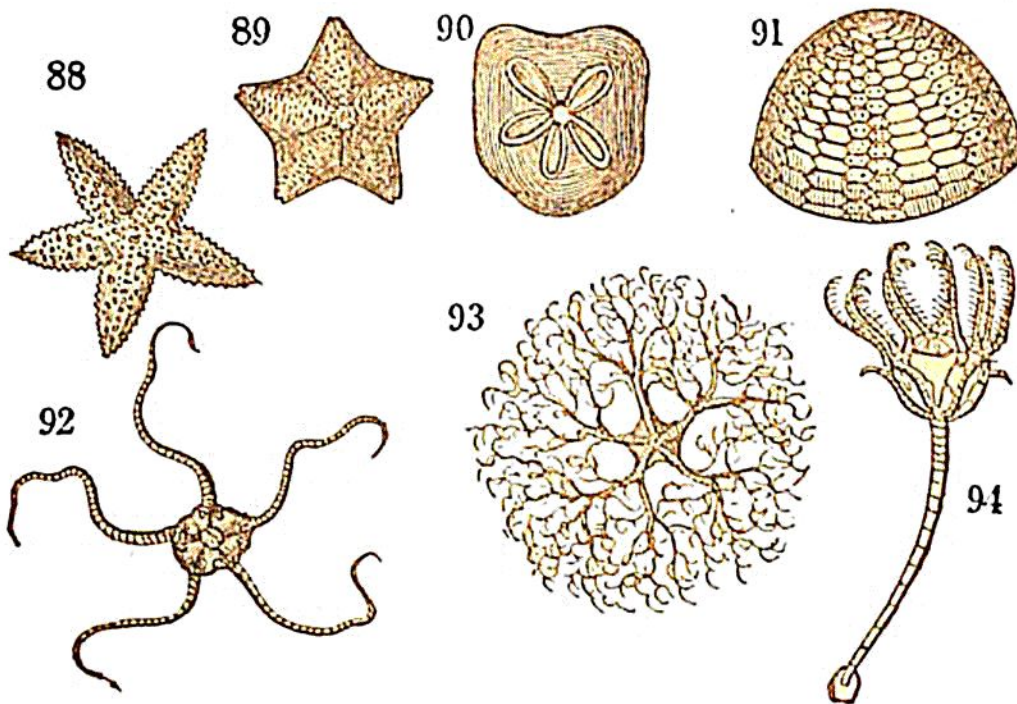


arrangements of their muscular fibres, and has described the actions by which they either attach themselves to the surfaces of rocks, or effect their sluggish movements.*

§ 6. *Echinodermata.*

ASCENDING in the scale of organization we come to the *Echinodermata*, a class which comprehends the families of the *Asterida*, the *Echinida*, the *Holothurida*, and the *Crinoidea*, together with other tribes of less note.



arrangement of their internal organs, retain, in a very marked manner, the radiated disposition so characteristic of Zoophytes: for we find all their parts symmetrically arranged either in lines, or in compartments, which proceed from a common centre, or axis, and which are repeated, in regular succession, all round the circumference (See Fig. 88 to 94.) Besides an external horny, or semi-calcareous covering, there is also provided, for the support of the softer parts, a kind of internal skeleton, or jointed frame-work. The organs in the interior of the body are farther supported by

* Mémoires de l'Académie des Sciences, 1710, p. 490.